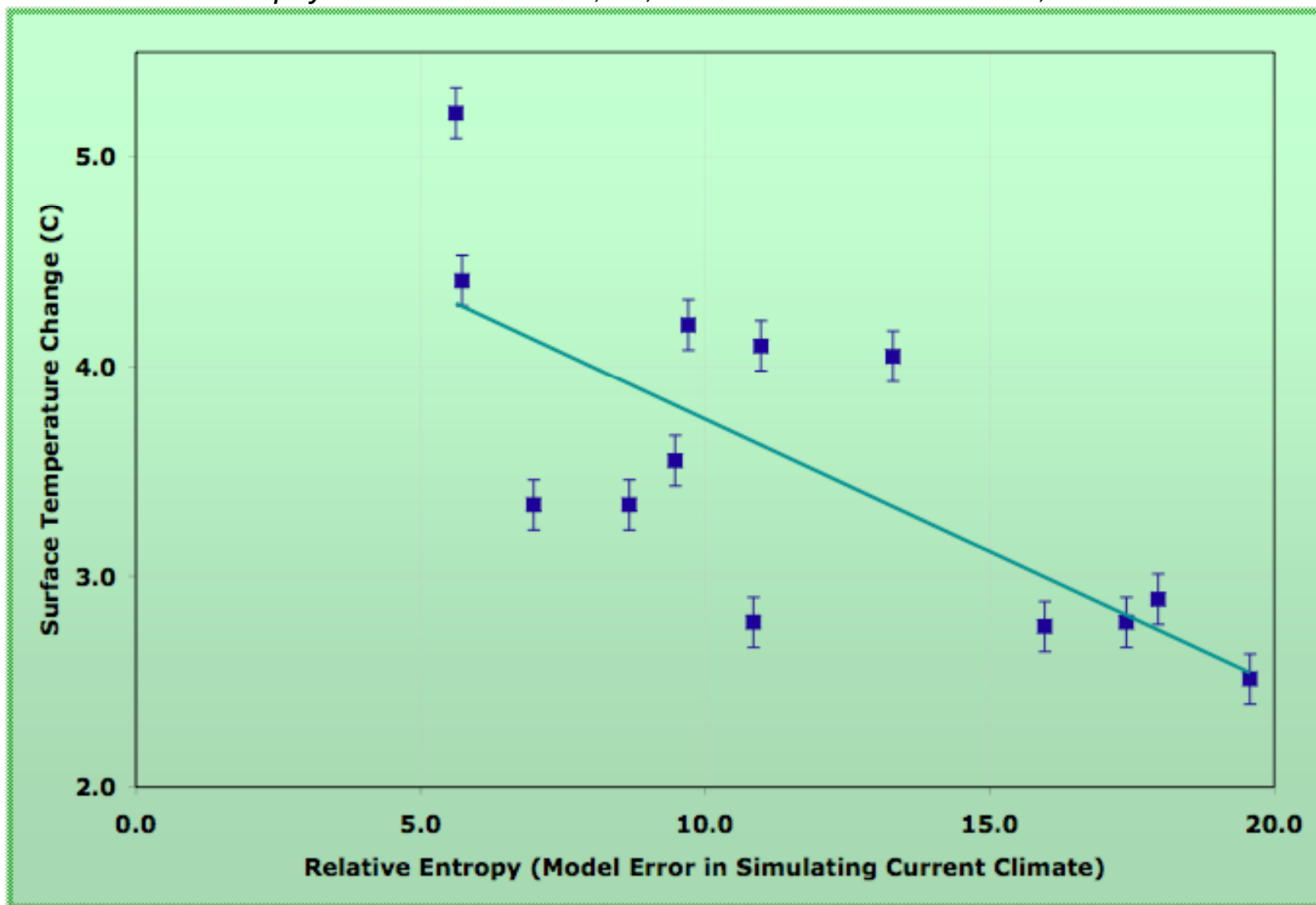


Climate Model Fidelity and Projections of Climate Change

J. Shukla, T. DelSole, M. Fennessy, J. Kinter and D. Paolino

Geophys. Research Letters, **33**, doi10.1029/2005GL025579, 2006



Model sensitivity versus model relative entropy for 13 IPCC AR4 models. Sensitivity is defined as the surface air temperature change over land at the time of doubling of CO_2 . Relative entropy is proportional to the model error in simulating current climate. Estimates of the uncertainty in the sensitivity (based on the average standard deviation among ensemble members for those models for which multiple realizations are available) are shown as vertical error bars. The line is a least-squares fit to the values.